



## Factory Radio Removal for 2017-2024 Nissan GTR

### CAUTION

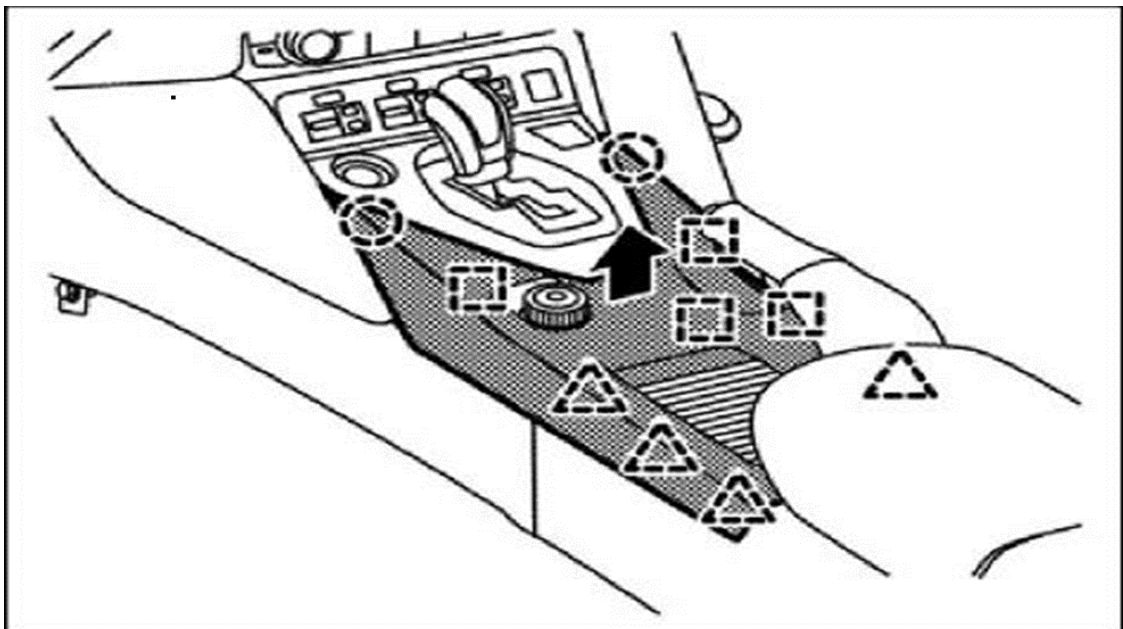
- When removing, always use a remover tool that is made of plastic.
- Never apply any chemical products like wax, coating agent, and compound for carbon parts. They are produced by composite manufacturing methods similar to a racing vehicle and special paint is adopted to enhance the look and feel of materials.
- Never place any carbon parts directly on the ground. Always protect them using a soft sheet during removal, installation, and replacement operations.

1. Disengage fixing clips, pawls and metal clips, and then remove center console center finisher.

O: Clip

[]: Pawl

^: Metal clip





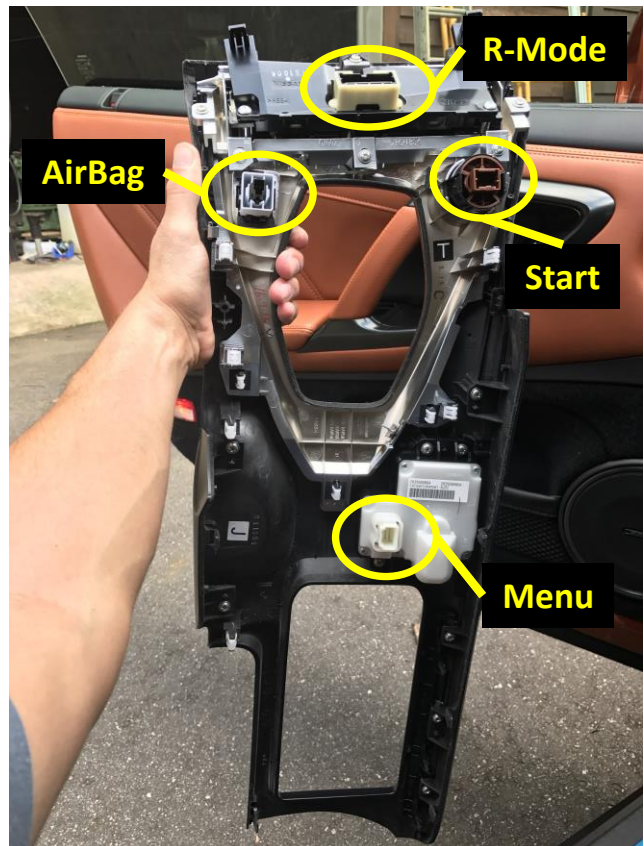
2. Use a plastic trim tool or a flat screw driver with a cloth (to protect the CF trim) to lift the center console and it will come out all in one piece.



4. Put the car in drive to remove the center console in one piece
5. **WARNING** – Nissan recommends that before servicing, turn ignition switch OFF, disconnect battery negative terminal and wait 3 minutes or more
6. Pick up slow and disconnect the start button, airbag and Racing buttons console

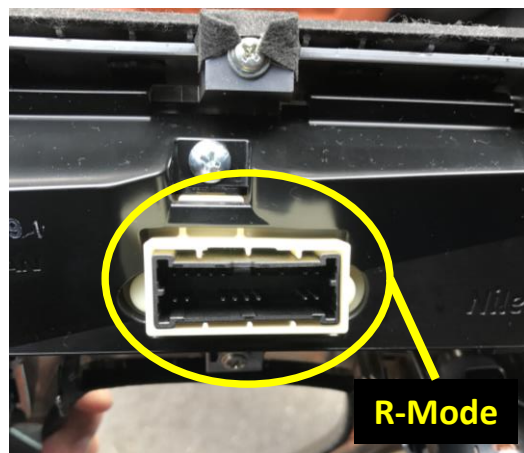
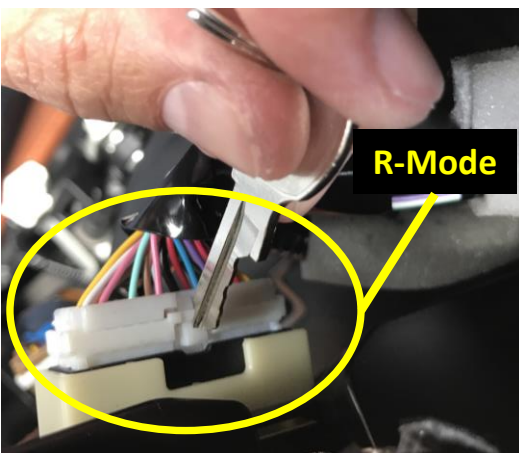
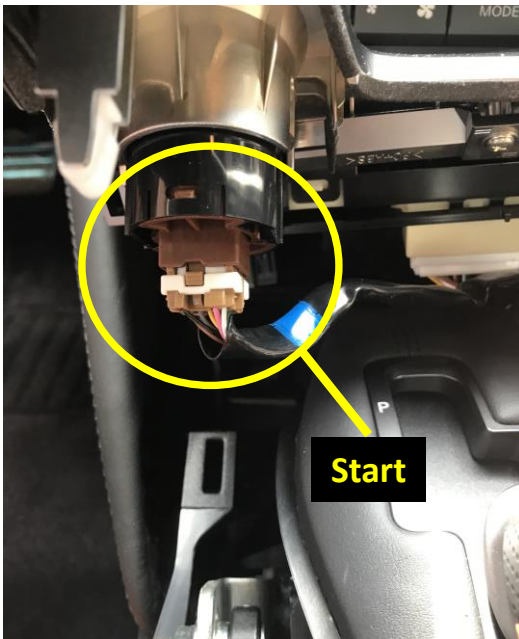
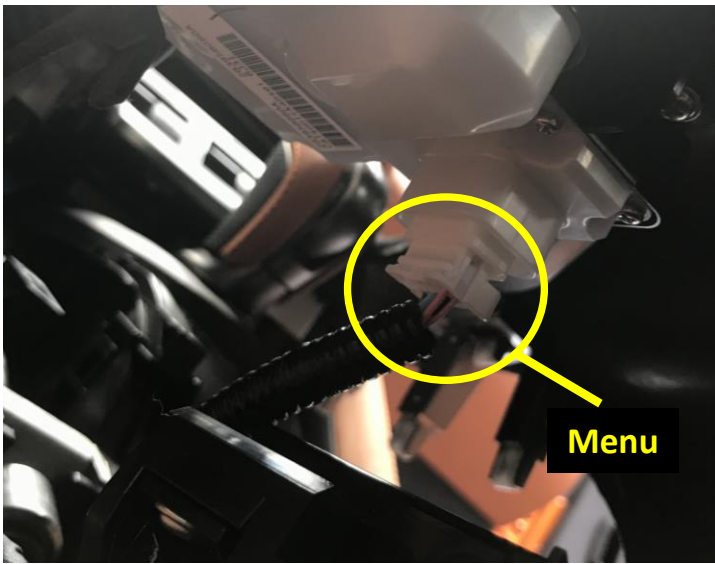


Before



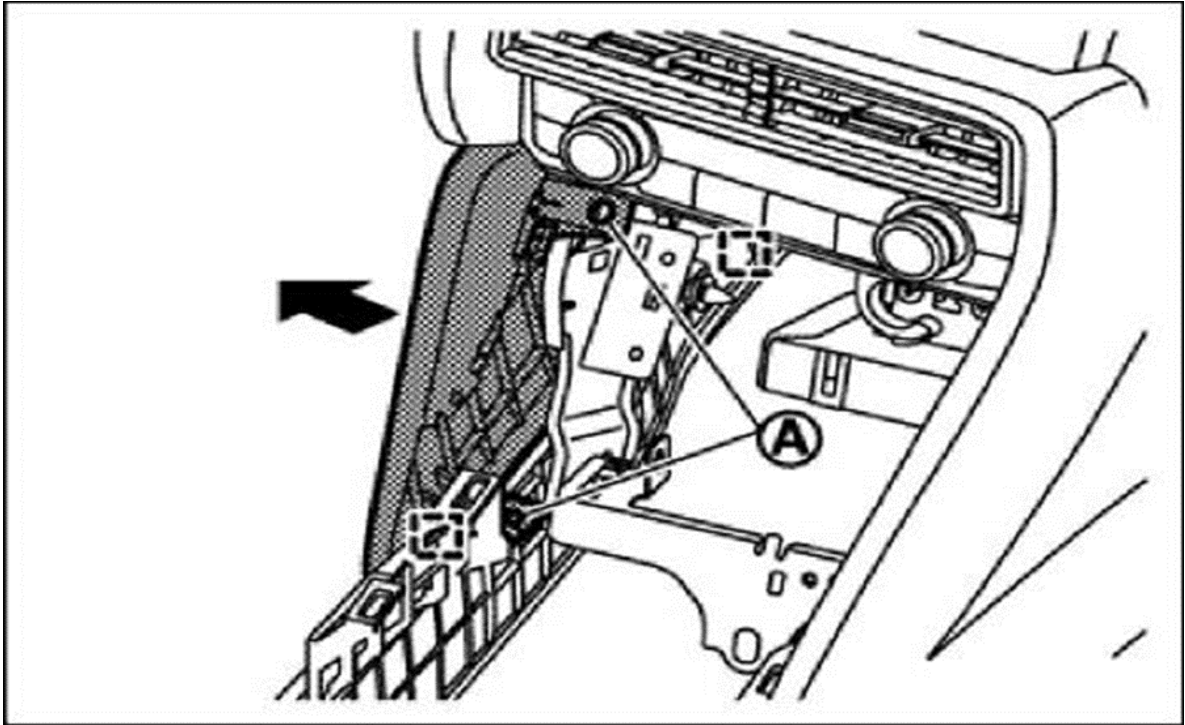
After connectors are removed  
See following page for details





Note: Sometimes a finger nail isn't enough to press the release clip down and a key or screwdriver may be required.

7. Remove fixing screws (A) and disengage fixing metal clips, and then remove instrument side panel LH

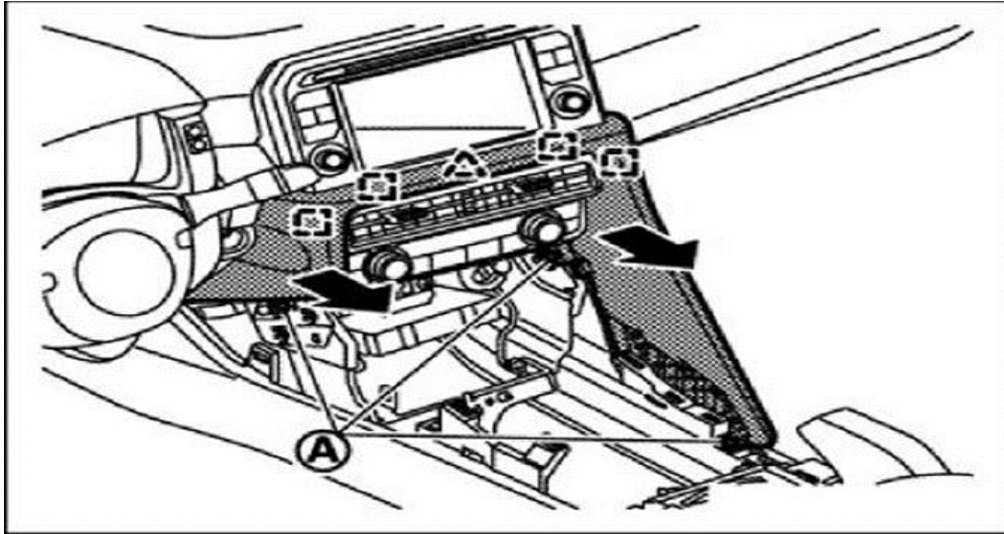




## 7.1 Remove the instrument side panel.



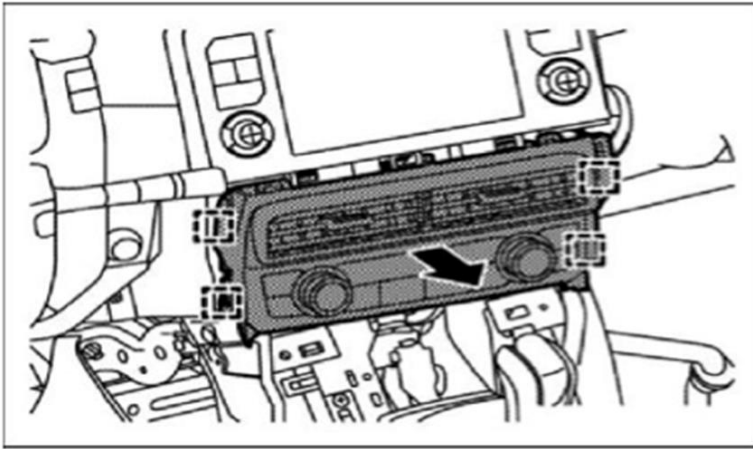
8. Remove fixing screws (A) and disengage fixing pawl, metal clips, and then remove instrument side panel RH.







## 9. Disengage fixing metal clips, and then remove cluster lid C



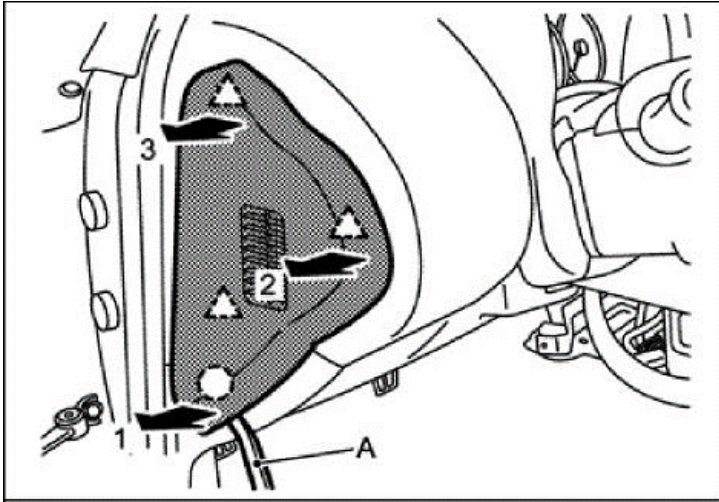
## 9.1. Remove cluster lid C.

- Disconnect harness connector.
- Remove A/C control after removing cluster lid C.
- Remove body side welt LH.





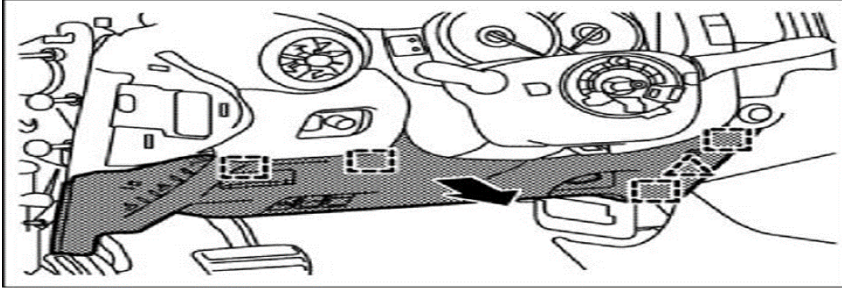
## 9.2. Disengage fixing clip and pawls using a remover tool (A), and then remove instrument side finishes



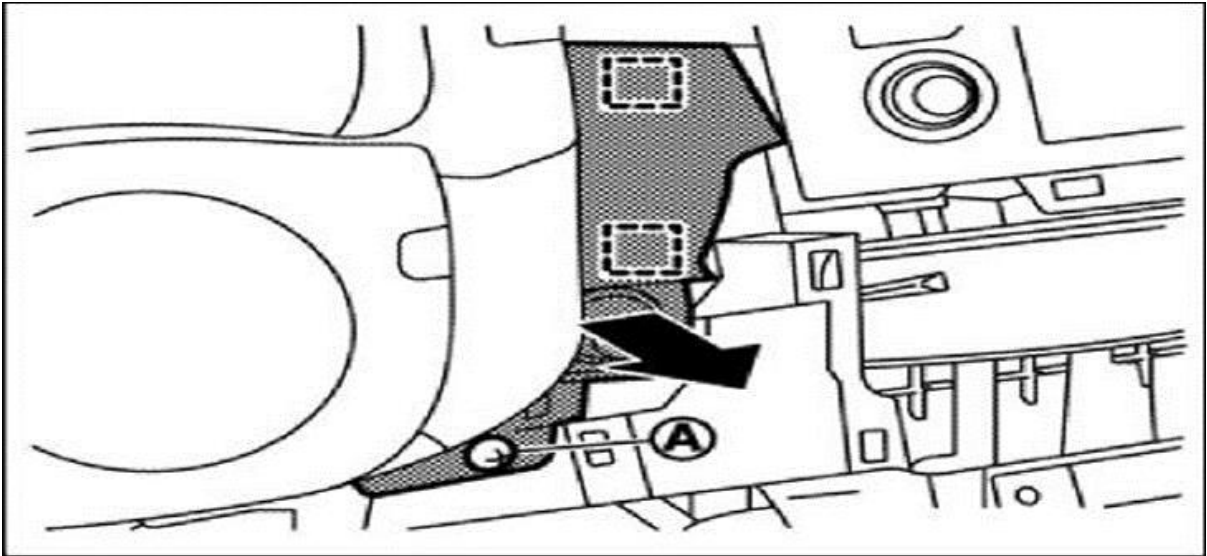


## 10. Remove instrument lower panel LH.

- Remove hood opener lever mounting bolts.
- Disengage fixing pawl and metal clips, and then remove instrument lower panel LH.
- Disconnect harness connector.
- When removing cover the stepper with a cloth for you won't damage it.

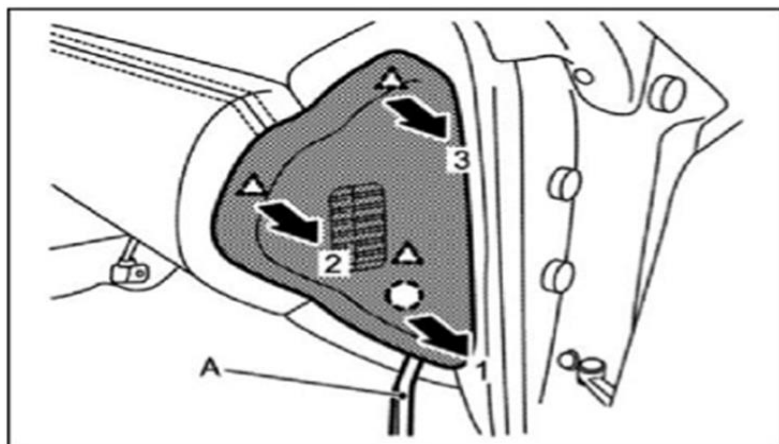


11. Remove fixing screw (A) and disengage fixing metal clips, and then remove instrument pad C.





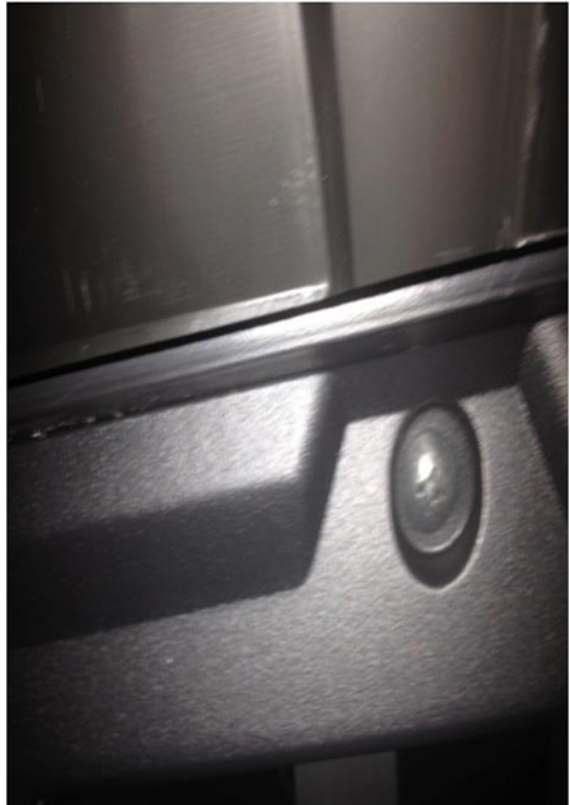
12. Remove instrument side finisher RH according to the figure



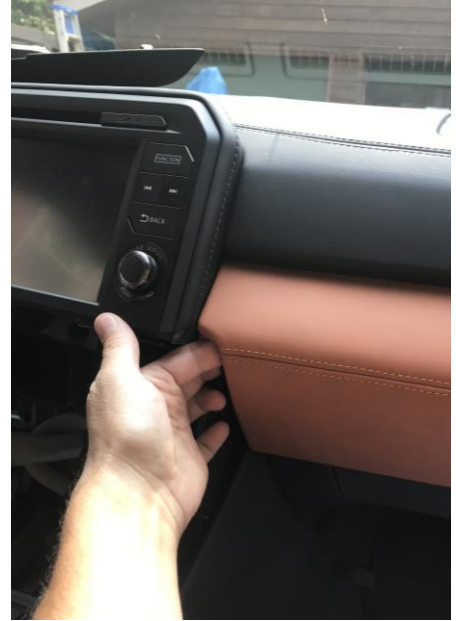
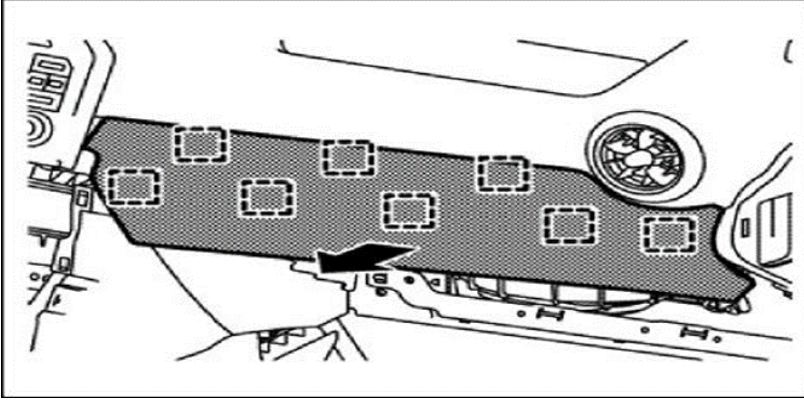


### 13. glove box cover.

- Open glove box.
- Disengage the two top screws
- Disengage fixing metal clips, and then remove instrument pad B.

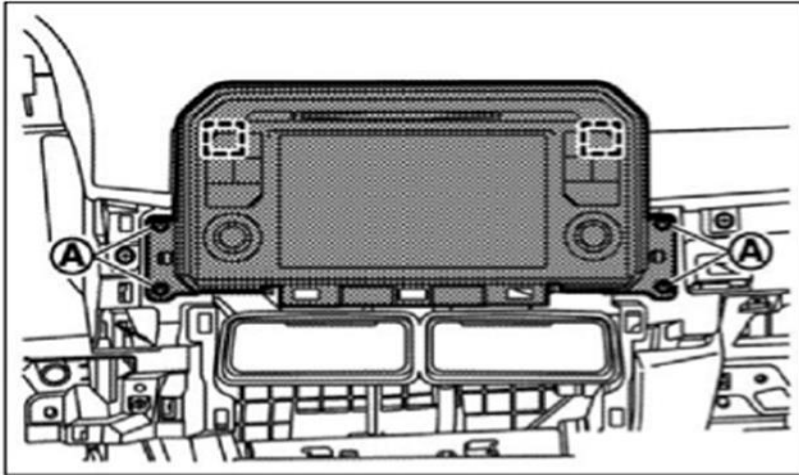


14. Disengage fixing metal clips, and then remove instrument and pull toward you (Pad B.)



## 15. Remove cluster lid D.

- Remove fixing metal clips and screws (A), and then remove AV control unit.





- Disconnect harness connector.
- Disengage fixing pawls, and then remove cluster lid D from AV control unit.

